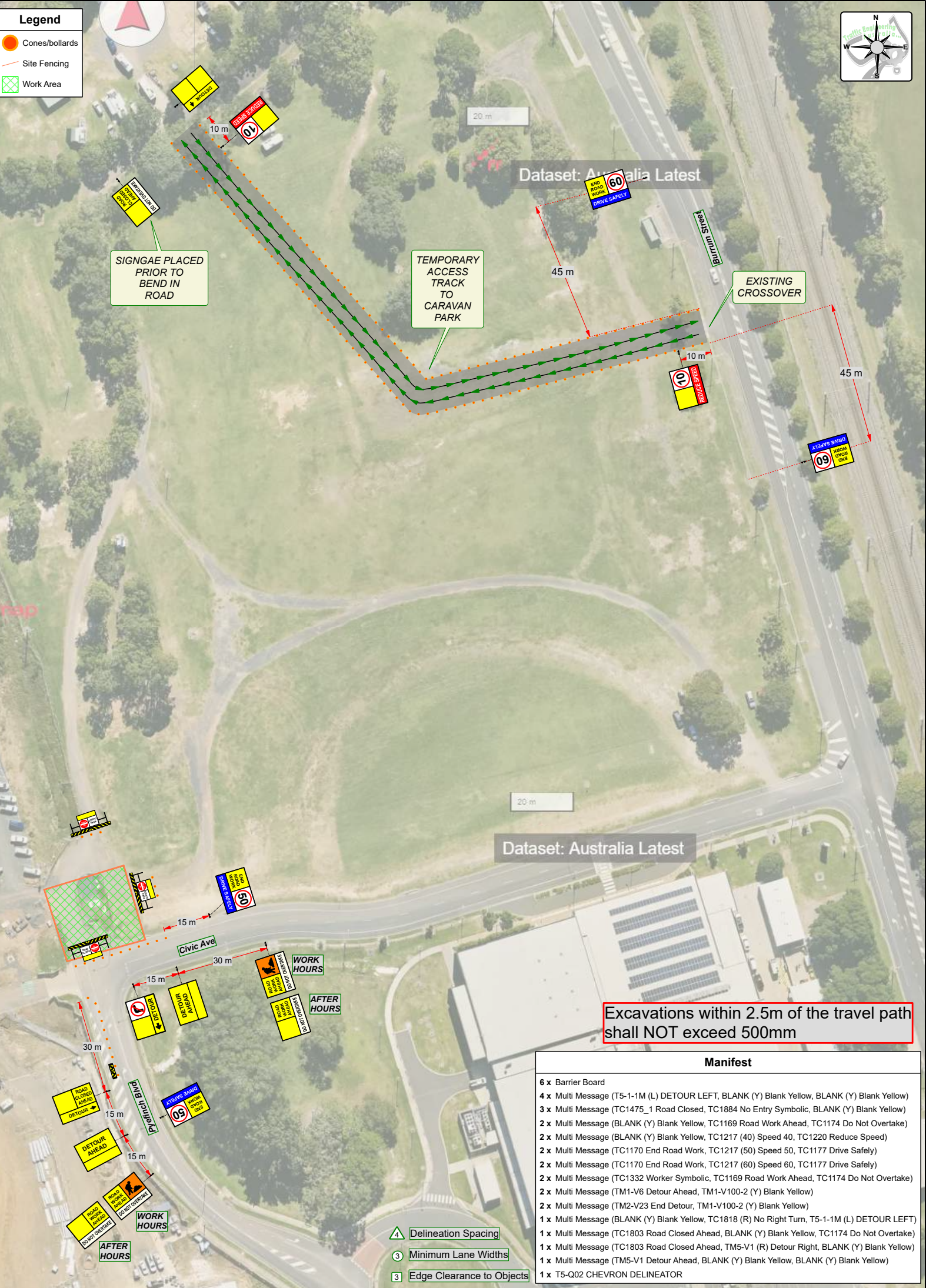




Legend

- Cones/bollards
- Site Fencing
- Work Area



Dataset: Australia Latest

Dataset: Australia Latest

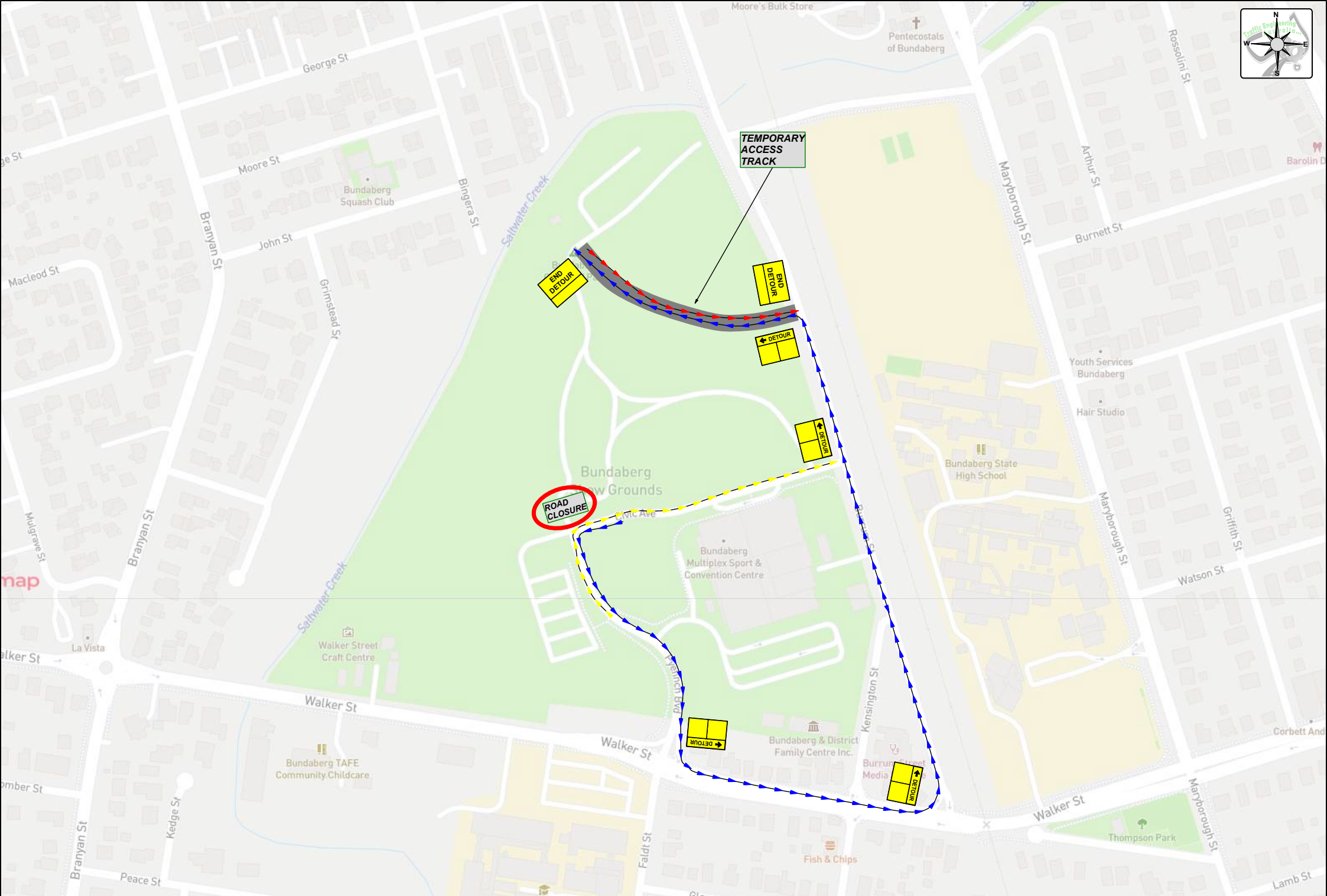
Excavations within 2.5m of the travel path shall NOT exceed 500mm

Manifest

- 6 x Barrier Board
- 4 x Multi Message (T5-1-1M (L) DETOUR LEFT, BLANK (Y) Blank Yellow, BLANK (Y) Blank Yellow)
- 3 x Multi Message (TC1475_1 Road Closed, TC1884 No Entry Symbolic, BLANK (Y) Blank Yellow)
- 2 x Multi Message (BLANK (Y) Blank Yellow, TC1169 Road Work Ahead, TC1174 Do Not Overtake)
- 2 x Multi Message (BLANK (Y) Blank Yellow, TC1217 (40) Speed 40, TC1220 Reduce Speed)
- 2 x Multi Message (TC1170 End Road Work, TC1217 (50) Speed 50, TC1177 Drive Safely)
- 2 x Multi Message (TC1170 End Road Work, TC1217 (60) Speed 60, TC1177 Drive Safely)
- 2 x Multi Message (TC1332 Worker Symbolic, TC1169 Road Work Ahead, TC1174 Do Not Overtake)
- 2 x Multi Message (TM1-V6 Detour Ahead, TM1-V100-2 (Y) Blank Yellow)
- 2 x Multi Message (TM2-V23 End Detour, TM1-V100-2 (Y) Blank Yellow)
- 1 x Multi Message (BLANK (Y) Blank Yellow, TC1818 (R) No Right Turn, T5-1-1M (L) DETOUR LEFT)
- 1 x Multi Message (TC1803 Road Closed Ahead, BLANK (Y) Blank Yellow, TC1174 Do Not Overtake)
- 1 x Multi Message (TC1803 Road Closed Ahead, TM5-V1 (R) Detour Right, BLANK (Y) Blank Yellow)
- 1 x Multi Message (TM5-V1 Detour Ahead, BLANK (Y) Blank Yellow, BLANK (Y) Blank Yellow)
- 1 x T5-Q02 CHEVRON DELINEATOR

- Delineation Spacing
- Minimum Lane Widths
- Edge Clearance to Objects

| | | | | | | | | | | | |
|---------------|---------------------------|----------------|--------------|--------------|-------------------|----------------------|-------------------|-----------|------------|------------|----------------|
| Site Location | Civic Ave / Pyefinch Blvd | Traffic method | Around | Developed by | Approved | Accreditation number | TMD Op895 | Date | 16/09/2024 | TGS Number | TGS-25-0311-1A |
| Suburb | Bundaberg West | Closure type | Road Closure | Name | Letitia Jurgeleit | Name | Letitia Jurgeleit | Signature | | Revision | 1 |



| | | | | | | | | | |
|---------------|---------------------------|----------------|--------------|--------------|-------------------|------------------------|-------------------|------------|-----------------------|
| Site Location | Civic Ave / Pyefinch Blvd | Traffic method | Around | Developed by | Approved | Accreditation number : | TMD Op895 | Date | 16/09/2024 |
| Suburb | Bundaberg West | Closure type | Road Closure | Name : | Letitia Jurgeleit | Name : | Letitia Jurgeleit | Revision | 1 |
| | | | | | | | | TGS Number | TGS-25-0311-1B |